



Walk, wheel and ride during Makuru (June to July)

It's always a good time to explore nature, whether you walk, wheel or ride to school.

The Noongar calendar has six different seasons, giving you plenty to discover in the great outdoors!

Noongar means 'a person of the south-west of WA,' or the name for the 'original inhabitants of the south-west of WA'. Noongar boodja – country covers the entire south-western portion of WA.

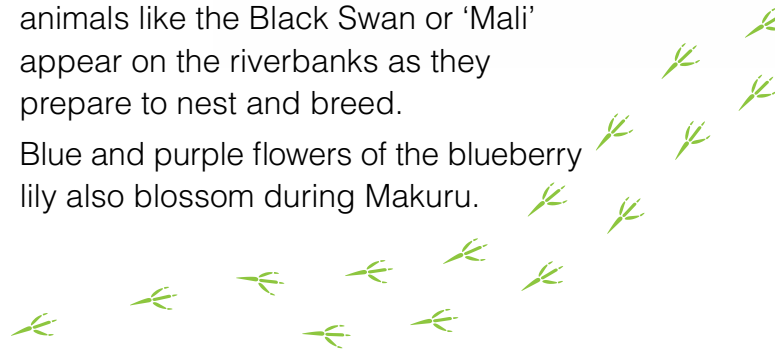


The Noongar season 'Makuru' is the coldest and wettest time of year and represented by the colour **dark blue**.



Waterways start to fill and many animals like the Black Swan or 'Mali' appear on the riverbanks as they prepare to nest and breed.

Blue and purple flowers of the blueberry lily also blossom during Makuru.



Can you spot the signs of Makuru while walking, wheeling or riding to school?

Pairs of birds such as ravens (wardongs)



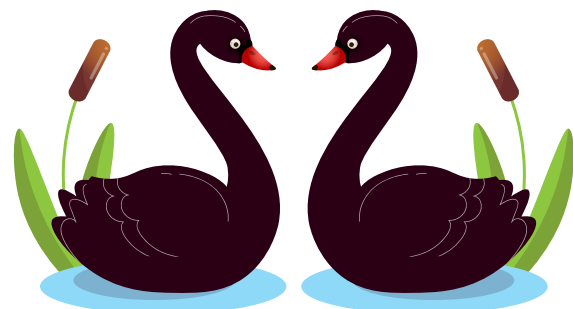
Rain



Blue and purple flowers of blueberry lily and purple flags



Black swans or mali



What did you find on your journey to school in Makuru?

Did you walk, wheel, or ride to school? What did you see?

Draw or stick photos of things you saw in the boxes below.

