



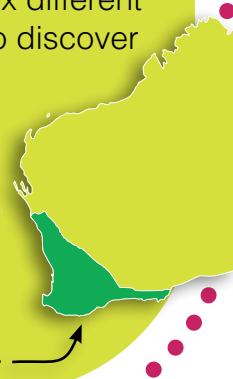
Walk, wheel and ride during Djlilba (August to September)



It's always a good time to explore nature, whether you walk, wheel or ride to school.

The Noongar calendar has six different seasons, giving you plenty to discover in the great outdoors!

Noongar means 'a person of the south-west of WA,' or the name for the 'original inhabitants of the south-west of WA'. Noongar boodja – country covers the entire south-western portion of WA.



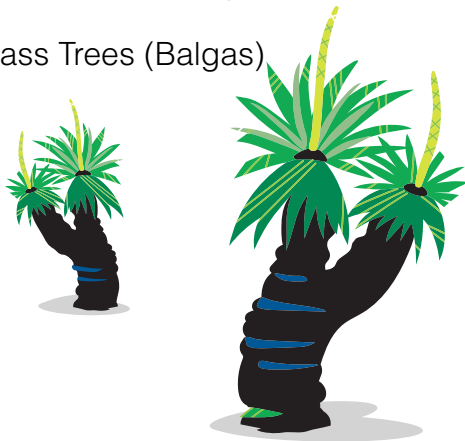
The Noongar season 'Djlilba' is a time of growth and is represented by the colour pink.

There is a flowering explosion that happens in the south-west during Djlilba, with new plants, like the acacia, coming into season.

As the days begin to warm up, many newborn animals enter the world, but watch out... parent birds sometimes swoop to protect their young!

Can you spot the signs of Djlilba while walking, wheeling or riding to school?

Grass Trees (Balgas)



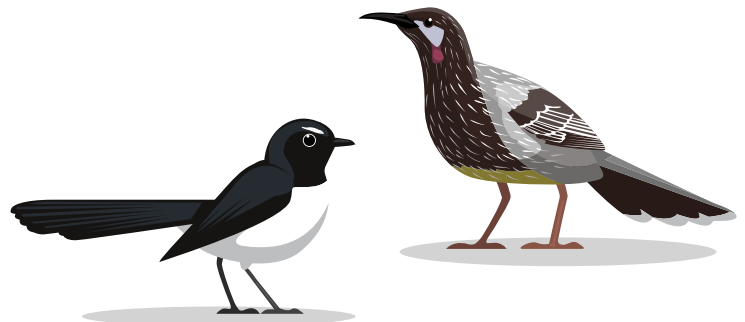
Magpie



Acacias



Willy wag tail or wattle bird



What did you find on your journey to school in Djilba?

Did you walk, wheel, or ride to school? What did you see?

Draw or stick photos of things you saw in the boxes below.

